

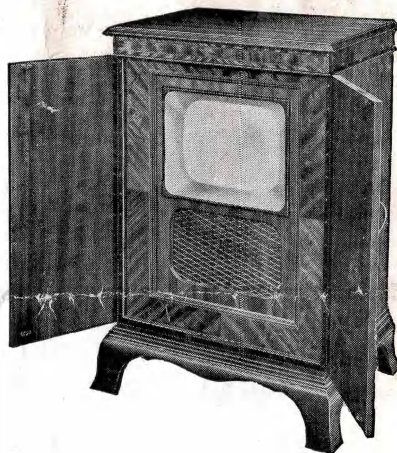
1949



1950

T/V

**M**ODEL LV21C is a fine example of modern T/V technique and superb cabinet styling. Using a special new aluminised 12 in. tube, this model gives greatly improved brightness definition, contrast and gradation of tone. Suppression circuits are incorporated and operation is by two simple controls.



MODEL LV21C

Housed in a luxurious cabinet, beautifully finished in mahogany and fitted with concealed rubber castors, Model LV21C provides everything the T/V connoisseur could wish for.

**76 Gns.** (Tax Paid)

*Cabinet dimensions and finish:* 23½ in. wide x 35½ in. high x 18½ in. deep—mahogany.

*Mains:* A.C. or D.C. supply 230-250 volts. An auto-transformer can be supplied for mains voltages between 190-220 volts A.C.—Price £1.

*Picture size:* approximately 10 in. x 8 in.

PYE LIMITED

CAMBRIDGE



T/V

# LONDON RECEIVERS

1949-1950

**WELL WORTH LOOKING INTO!**

PYE LIMITED



CAMBRIDGE



1949

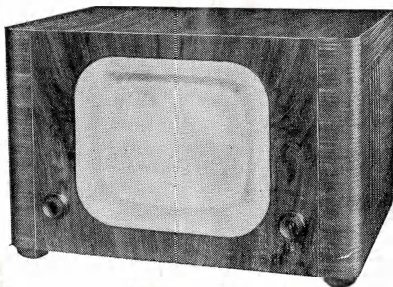


1950

IT is not just chance that makes the Radio Trade say "What Pye does to-day, the television industry will do tomorrow." For we staked our fortune on television; we believed in good programmes and fine sets for EVERYONE, and that means the greatest number of viewers—the cheapest and best television sets.

**M**ODEL LV20 is a smart inexpensive table set providing a brilliant picture of superb definition. Special suppression circuits have been incorporated which reduce interference to an absolute minimum, and tuning is by two simple controls.

Pye engineered throughout to give outstanding performance and complete reliability. Model LV20 represents to-day's finest value in T/V Table receivers.



MODEL LV20

£48 17 3

(Tax Paid)

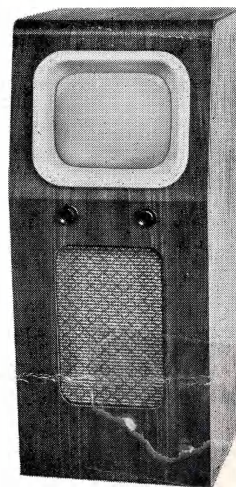
*Cabinet dimensions and finish* : 18 $\frac{3}{4}$  in. wide x 12 $\frac{1}{4}$  in. high x 12 $\frac{3}{8}$  in. deep; beautifully finished in highly polished walnut.

*Mains* : A.C. or D.C. supply 230-250 volts. An auto-transformer can be supplied for mains voltages between 190-220 volts A.C.—Price £1.

*Picture size* : approximately 8 in. x 6 in.

**H**ERE is a compact console model providing an excellent picture with improved black and white contrast. As simple to operate as a radio receiver, Model D18T also incorporates special suppression circuits. The cabinet is of simple modern design and is conveniently fitted with concealed easy-running rubber castors.

*Cabinet dimensions and finish* : 13 in. wide x 30 $\frac{1}{4}$  in. high x 13 in. deep—beautifully finished in highly polished walnut.



MODEL D18T

£60 8 8

(Tax Paid)

*Mains* : A.C. or D.C. supply 230-250 volts. An auto-transformer can be supplied for mains voltages between 190-220 volts A.C.—Price £1.

*Picture size* : approximately 8 in. x 6 in.

### FEATURES—Models LV20 and D18T

- ★ Transformerless design operating on either A.C. or D.C. mains.
- ★ Only two controls.
- ★ Brighter picture with improved black & white contrast.

- ★ Wide viewing angle.
- ★ Full standard 9" tube.
- ★ Special new suppression circuits that cut down interference.

## WELL WORTH LOOKING INTO